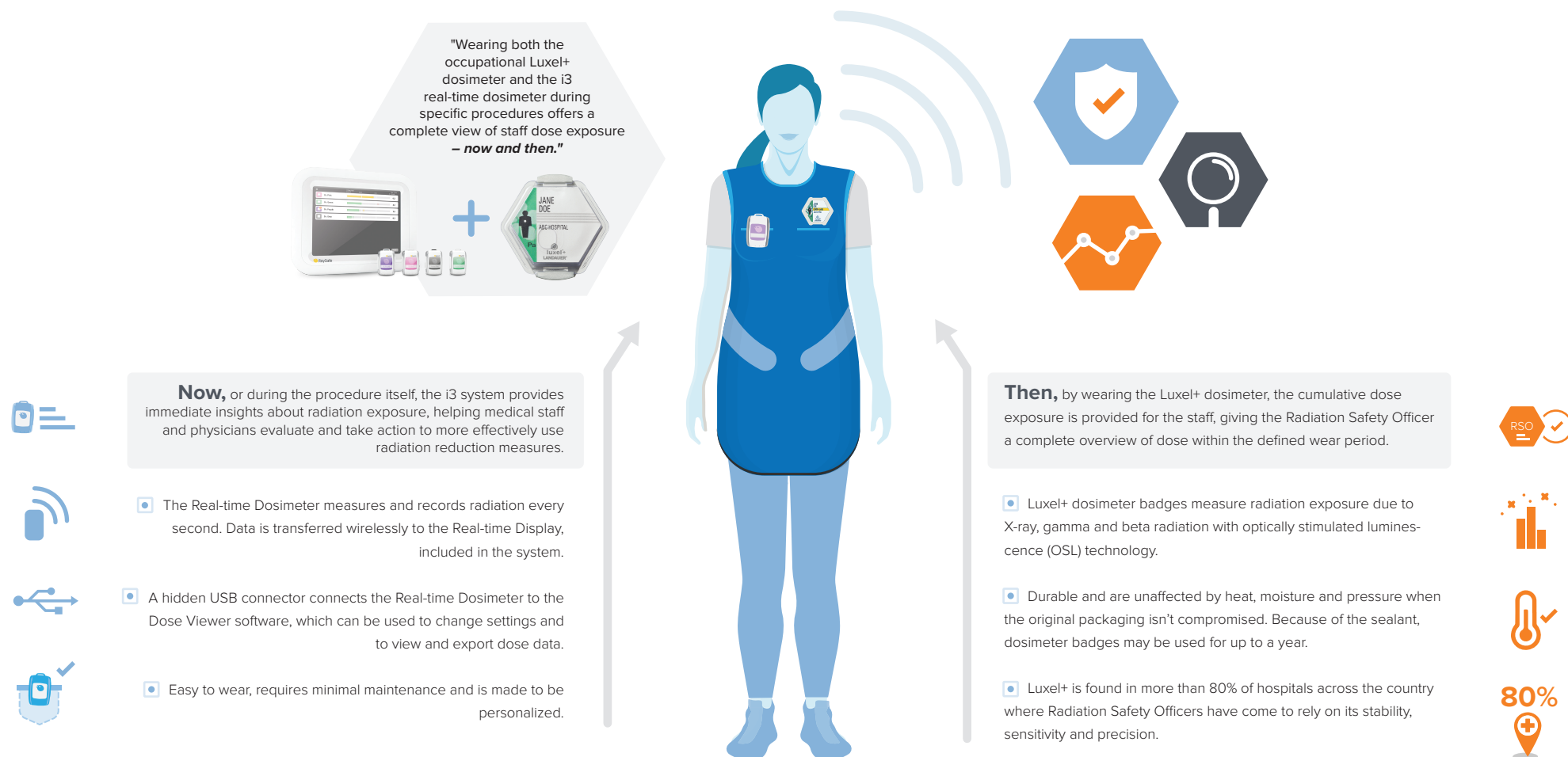


i3 + luxel

When is Wearing Two Dosimeter Types Better Than One?

The synergy between the **RaySafe i3** and the **LANDAUER Luxel+** provides organizations with a complete view of each employee's exposure levels. RSOs can gain new insights into practice patterns for today's complex procedures and better understand how to limit radiation exposure.



Combining the dose exposure readings of the **RaySafe active i3 real-time dosimeter** (in selected procedures) with the **LANDAUER Luxel+ dosimeter** yields information and insights valuable to RSOs and imaging department leaders.