



#### PRODUCT FEATURES:

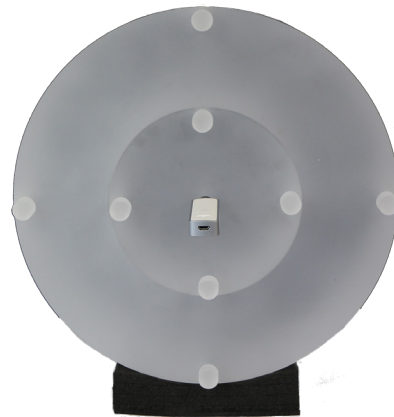
- Complies with IEC 61223-3-5 and IEC 61223-2-6
- Enables dose rate profile measurements of a tomographic section

## Nested Adult Head & Body CTDI Phantom

Set of homogenous cylinders designed to simulate an adult head and body. Used for Computed Tomography Dose Index (CTDI) measurement and to separate dose information for each.

When performing dose profile measurements, dose phantoms allow to collect information for the maximum, minimum and mid-range values of the nominal tomographic section thickness.

The two parts are frosted with white lines to simplify the alignment at setup. It is delivered in a wheel carried, heavy duty Storm Case with additional space for an X2 Base Unit, an X2 CT and an X2 R/F Sensor.



#### TECHNICAL DATA

Product No. 4559815

- Adult body:  
150 mm (5.0 in.) thick homogenous PMMA cylinder. Ø 320 mm (12.6 in.) with four Ø 13.1 mm (0.52 in.) CT probe holes, 90° apart and 10 mm (0.39 in.) from the edge
- Adult head:  
150 mm (5.0 in.) thick homogenous PMMA cylinder, Ø 160 mm (6.3 in.), with five Ø 13.1 mm (0.52 in.) CT probe holes, one in the middle and four around the perimeter, 90° apart and 10 mm (0.39 in.) from the edge
- Engraved crosshair markings on phantoms for easier positioning
- Acrylic rods for plugging all holes in the phantoms
- Comes in a heavy duty Storm Case with interior to also fit an X2 Base Unit, an X2 R/F Sensor and an X2 CT Sensor
- PMMA material with 1.19 g/cm<sup>3</sup> density