



PRODUCT FEATURES:

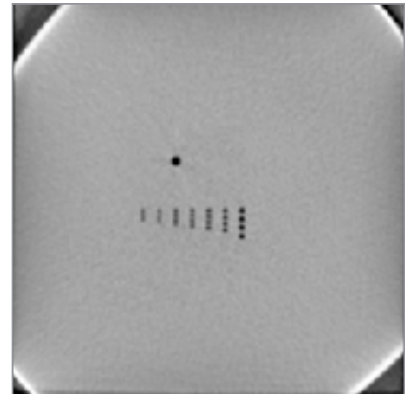
- Complies with DIN 6868-150
- Test cone beam functionality

RaySafe P 3D Fluoro Phantom

The RaySafe P 3D Fluoro is used to test the cone beam functionality of fluoroscopic X-ray systems.

The supported tests include:

- Spatial resolution
- Homogeneity
- Noise and artefacts



TECHNICAL DATA

Product No. 4712527

- Dimensions: 120x20x60 mm (4.72x4.72x2.36 lbs)
- Weight: 1.0 kg (2.2 lbs)
- Material: PMMA, 3 plates glued together where the inner plate holds drillings for spatial resolution tests with \varnothing 0.50, 0.60, 0.70, 0.80, 0.90, 1.00, and 1.30 mm (0.020, 0.024, 0.028, 0.031, 0.035, 0.039, and 0.051 in.)
- One extra drilling \varnothing 2.5 mm (0.098 in.) through all 3 plates
- Delivered in a hard case