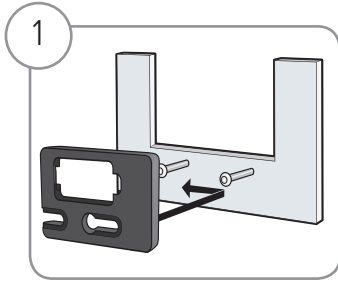
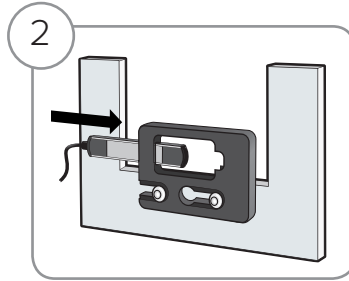


Holders for GE, using RaySafe Xi/Solo detectors

RADIOGRAPHY HOLDER



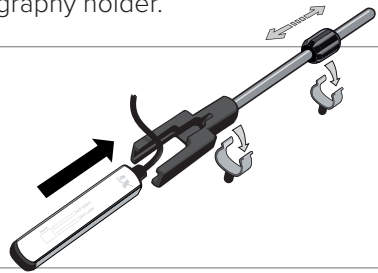
1
Attach the radiography holder to the GE holder on the radiography machine.



2
Insert the RaySafe Xi R/F detector into the radiography holder.

VASCULAR HOLDER

Use rod holder distance to fit the vascular holder onto the GE holder.
Insert the RaySafe Xi R/F detector into the vascular holder.



MAMMOGRAPHY HOLDER

The mammography holder makes it possible to replace an ionization chamber with a RaySafe Xi MAM detector.

Insert the RaySafe Xi MAM detector into the holder frame.

Put the holder frame on top of the spacer, or put the holder frame directly into the GE mammography holder.

